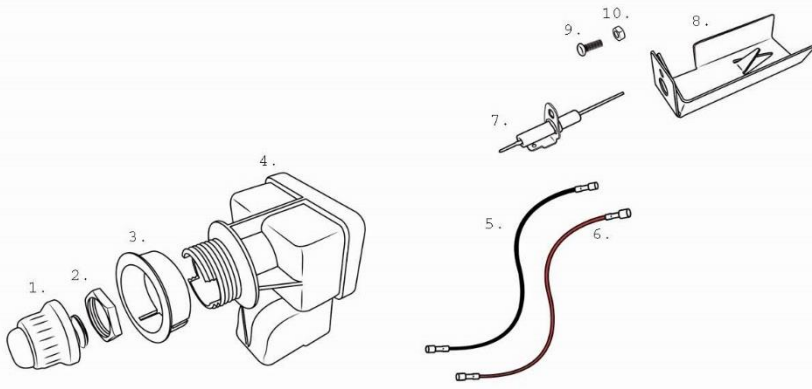


## Single Spark Installation Guide



When you receive the igniter it should be all of the parts that are referenced in the photo. Be sure you have everything before starting this process. Also please note that this igniter uses an AA battery. You will want to verify that the opening hole on the front of the control panel on your grill is the same size as the threaded portion of #4.

- 1st you would want to look to remove the front control panel of the grill. This typically requires you to remove all of the control knobs, and look on the left, right and bottom (above the grease tray) of the control panel and remove any screws to free the control the panel [please note every grill is different in regards to the screw placement]
- Once the control panel has been removed you should (if it is still intact) see the old igniter. In this case you can remove it and set it aside.
- Now that the old igniter is removed you will slide #3 into position on #4, and feed the threaded portion of #4 through the existing hole of the control panel.
- Next you will then secure this with #2 (do not over tighten due to them being plastic parts and overtightening can lead to #2 [the plastic nut] stripping on the threads of #4). Please note that not all grills have the same layout behind the control panel. You may have to maneuver #4 (turn it at an angle) to have everything fit. It is recommend that you test fit this part to be sure it will fit and function correctly for your unit.
- Next we would recommend that you look to attach the collector box - #8, and electrode #7 to the grill. Due to this being a single spark igniter it will only come with one electrode and collector box (typically to light the burner only on the right side of the grill)
- #7 will slip into the larger hole of #8. You will then use #9 and #10 to attach this to the grills fire box (please note that every grill is different and the mounting holes can be different from one to the next) once this is mounted the # 8 should be to the left of the burner with the electrode #7 and the open area of #8 facing the burner. It should be in this position so the gas coming out of the burners collects inside of that box and once the spark happens (a small ark will jump from the tip of #7 to the triangle tip inside of the collector box) it will light the gas thus lighting the burner.
- Now that both #2-4 and #7-10 are attached you will look to connect #5 and #6 (black and red wires) from #4 to #7.
- You will notice that the connections on #5 is the same size on either end. you will plug on end into #4 and the other end onto #7 (the longer metal tab that is sticking out of the while plastic portion of the electrode). You will then notice that #6 has a small connection on one end (same size as #5) and a larger one on the other end. the small end will plug in to #4 and the larger end will plug onto #7 as well but just below where you plugged in #5 on that larger metal tab.
- Now that everything is connected you can look to test the igniter before completely assembling the control panel.
- You will put a AA battery inside of #4 (the + out, towards you) then screw on #1. You can then press the rubber button (#1) and you should then hear a clicking and see a spark jumping inside of the collector box. If nothing is happening then you will want to review the above steps, and be sure you are using a new battery. If you are still not hearing any clicking, then you will want to contact our customer service so we can further help you.
- If you hear clicking and see a spark, then everything has been connected and installed correctly and you can proceed to attach the control panel and start using your single spark igniter.